



Normeca AS

SUPPLIER OF MOBILE HOSPITALS

Mailandvn 12, P.O. Box 404, 1470 Lorenskog - Norway

Tlf.: +47 67 92 76 00 - Fax: +47 67 92 76 92

Mail: post@normeca.no - Web: www.normeca.no

ROFI COMMAND POST

- when quality and flexibility is required



- For extreme climate
- Building configurations
 - with command vehicles
 - with command post containers
 - with tents
- Long life cycle

ROFI COMMAND POST

ROFI COMMAND POST tent – a preferred solution when establishing complex command post configurations in field operations.

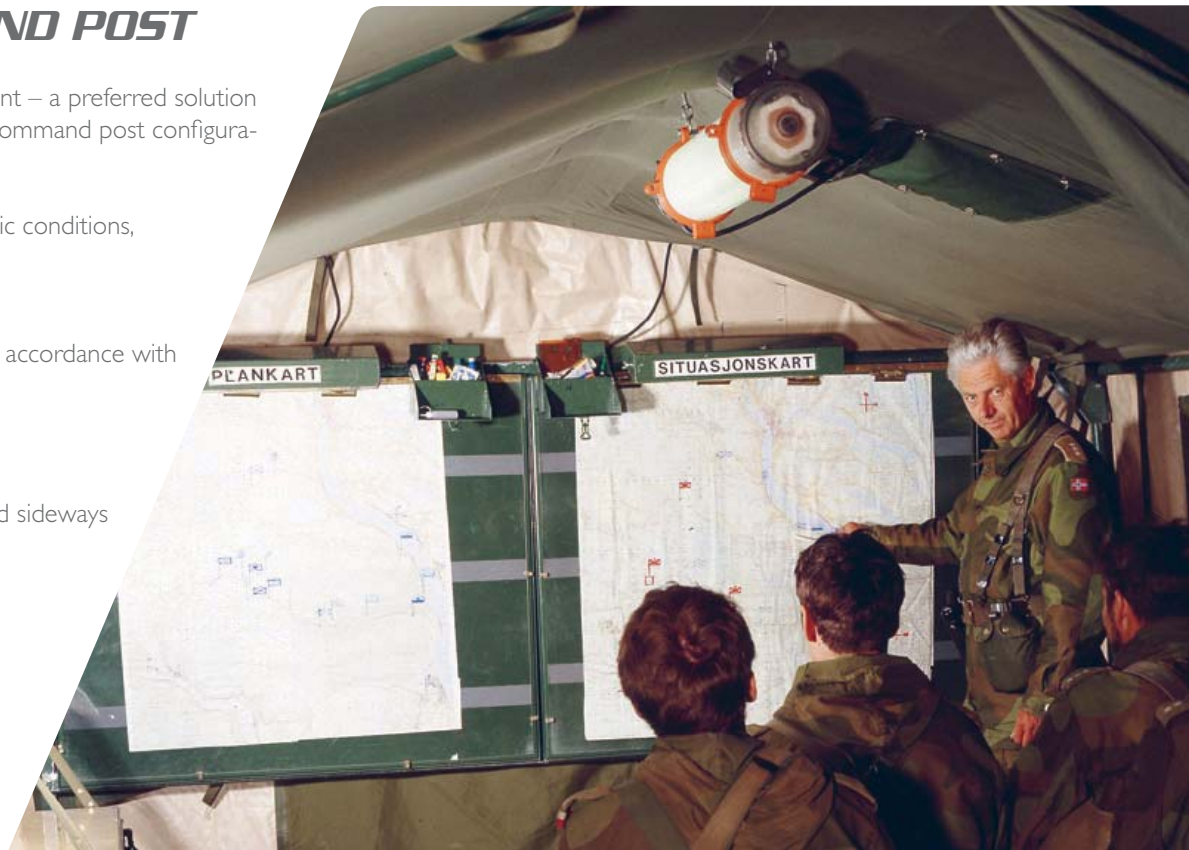
Designed for extreme climatic conditions, from – 44 to + 49°C.

Climate Zones:

A1 - A3, B1 - B2, C0 – C2 in accordance with STANAG 2895.

Key features:

- Core unit: 12 m²
- Connectible lengthwise and sideways gable/gable or door/door
- Flexible
- Insulated floor
- Black- out curtains



AREA OF USE:

The tent is customized to be used as command post tent.

ROFI COMMAND POST tent was developed in cooperation with the Norwegian Armed Forces and has served as core unit in field operations world wide for the last decades. Even after investing in command post containers, the command post tent is used for building configurations between the containers and for allowing interconnection to command vehicles.



ADVANTAGES:

- Flexible for building configurations
- Insulated floor
- Black- out in light locks
- Wide range of practical accessories

Accessories like field desks and map boards are supplied in sets of two and are designed for field use with many practical details included.

The concept includes, in addition to the tent itself, a variety of practical accessories and types of connectors, adding to the functionality of the tent.

The core unit is 12 m², connectible lengthwise gable/gable and has one connectible door along each sidewall and each gable, allowing interconnection in 4 directions.

The standard set-up is with 2 tents connected lengthwise and 5 vehicles connected to the various doors through use of light locks/ connectors tent to vehicle.

The central connection area between the different operative units in the command post tent is also used as the “briefing room”. Short distance to the operators in the vehicles enables speedy exchange of information that can influence situation descriptions. Internal mobility in the command post tent is not influenced.

The office room is flexible in size and operation. Curtains can be put up to separate the operator from the rest of the staff.

ISO 9001 Certified



Certificate no. XXX

ROFI Industrier as represents more than 60 years of experience within the textile industry. A comprehensive integration with our suppliers and partners enable us to meet the requirements for progressive development, system solutions and a stock-hold of selected items. We continuously maintain our certificate covering quality assurance/quality control.

REFERENCES:

ROFI is an experienced supplier of tents to UN-operations and defence customers, with success in introducing new tent models meeting customer requirements and changing conditions world wide.

The ROFI COMMAND POST tent is used by the Norwegian Armed Forces and has also been taken into use by other NATO- countries.

SHIPPING INFORMATION

Weight and volumes upon request.



ROFI COMMAND POST ACCESSORIES



Connectors to vehicle



Connectors to vehicle



Connectors to vehicle



Connectors to container



Map Board/ Field Desk

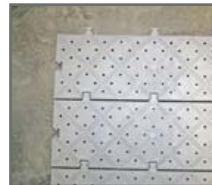
ROFI FIELD EQUIPMENT



ROFI AC/Heaters



ROFI Volcano sauna



ROFI Floor



ROFI Folding chair/table



ROFI Lighting



ROFI Camp light



ROFI Camp light



ROFI Cabin light



ROFI Bench



ROFI Field bed



ROFI Disco bed